



Free your hands

RealWear HMT

Safer. Faster. Smarter.

The RealWear® HMT provides the foundation for Connected Worker programs. Use it in wet, dusty, hot, dangerous and loud industrial environments. A fully rugged head-mounted device, it optionally snaps into safety helmets or attaches to bump caps and can be used with safety glasses or corrective eyewear.

The high-resolution micro display fits just below your line of sight and views like a 7" tablet. It's an industrial dashboard: there when you need it and out of your way when you don't.

The HMT works with powerful software applications from our solution partners in four core categories, each optimized for completely hands-free voice control. That means no scrolling, swiping, or tapping - just simple voice commands. Use it for remote mentor video calling, document navigation, guided workflow, mobile forms and industrial IoT data visualization.



100% Hands free

Voice based operating system with local speech recognition in loud areas.



Unmatched noise cancellation

Four digital microphones and advanced algorithms.



Powerful audio

Integrated speaker and 3.5mm audio jack for use with hearing protection.



PPE compatible

Designed to work with standard hard helmets, bump caps and safety glasses.



Full shift internal battery

Field swappable for continuous use.



Outdoor display

Appears size of 7" tablet, viewable in bright sunlight.



Water resistant

IP66-Protected against seas or powerful jets of water.



Dust tight

IP66-Complete protection against the ingress of micro particles.



Shock Resistant

Resistant to 2 meter drops onto concrete from any angle.



Built rugged

Fully operational from -20° C to +50° C ML-STD-810G.

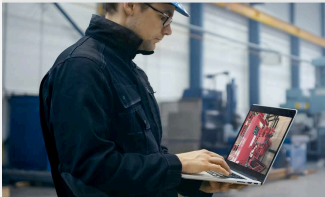
Hands-Free Use Cases



Visual Assist

The RealWear HMT is equipped with a high definition camera that can be used to capture photos and videos in hard-to-reach places like tunnels, towers, or behind large machinery and equipment.

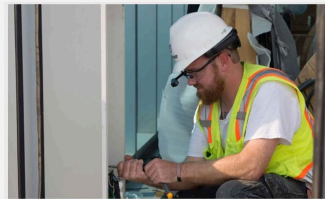
- Hands-free verification and documentation
- Audits, inspections and quality assurance
- On-Demand Training



Remote Mentor

The front line worker can share their point of view instantly with the back office subject matter expert, such as when using their hands to point to issues on a piece of heavy equipment, with full zoom features and high resolution smart camera.

- Maintenance and repair
- Manufacturing and assembly
- Telemedicine



Digital Workflow

Digital Workflow solutions provide visual instructions, checklists, data entry, and visual documentation of completed steps while on the go. HMT enables digital workflow to reach workers when and where they need it—improving productivity and reducing operational errors.

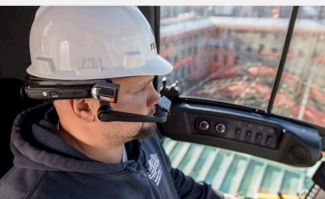
- Picking and packaging
- Product testing and quality control
- Incident reporting, health and safety



Document Navigator

Viewing documents on the HMT enables your workforce to view technical manuals and documents without needing to hold them in their hands. Using reference documents with eyes forward and hands-free improves productivity and safety.

- Voice-controlled documentation
- Step-by-step work instructions in the field
- Time on task and errors reduced



Data Visualization

Industrial IoT solutions with RealWear's HMT provide operators the real-time data they need when operating, inspecting, or maintaining equipment.

- Location-based, contextually relevant data in the field in real-time
- Hands-free access to cloud data
- Customized dashboard tailored for any scenario

For more information contact or to contact RealWear, visit www.realwear.com